



# VICTORY Accessibility

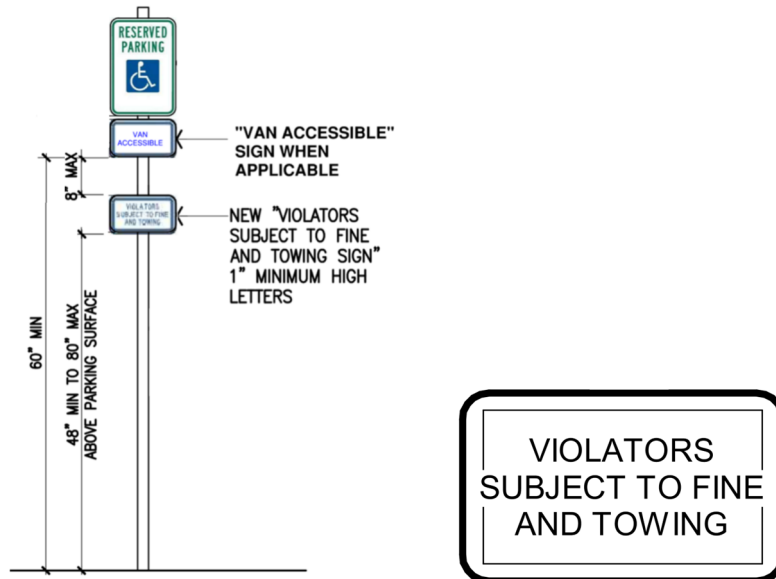
Brian Massey, RAS #1511  
469-260-9037

[TDLRbyBrian@gmail.com](mailto:TDLRbyBrian@gmail.com)

## SELF-INSPECTION CHECKLIST

### Parking Lot and Accessible Routes:

- Is accessible parking on the shortest route to the entrance?
- If there is a public sidewalk along the front, there should be an accessible route connecting it to the main entrance.
- Accessible spaces and aisles cannot slope more than 2% in any direction.
- Accessible space and aisle are sized at least 8' and 8' or 11' and 5' for VAN Accessible (at least one for every six accessible spaces must be van). Additional accessible spaces can be 9' and 5'. Spaces can share an aisle.
- Aisle must be marked NO PARKING in 12" high letters at least 2" wide.
- Accessible spaces must be marked with signs at least 48" to bottom. Signs must include "van accessible" for those spaces and a violations sign that says "Violators Subject to Fine and Towing" in 1" letters.



- Sidewalks and accessible routes cannot slope more than 5% running and 2% cross slope MAX.
- Any ramps cannot slope more than 1:12 (8.33%).

- Any stairs should have proper handrails on each side.

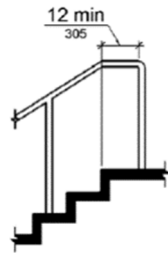


Figure 505.10.2 Top Handrail Extension at Stairs

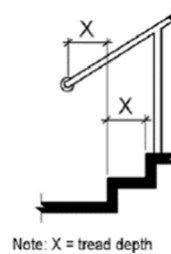


Figure 505.10.3 Bottom Handrail Extension at Stairs

- Regular ramps rising more than 6" must have handrails on each side. Curb ramps do not require handrails.

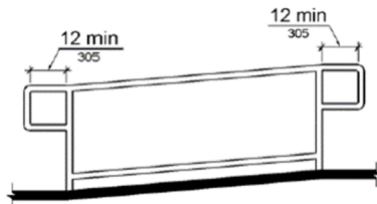


Figure 505.10.1 Top and Bottom Handrail Extension at Ramps

**Entrances:**

- Door landings on each side of doors AND gates cannot slope more than 2% in any direction.
- Thresholds and changes in elevation cannot be greater than 1/2" with the appropriate bevel.



Figure 303.2 Vertical Change in Level

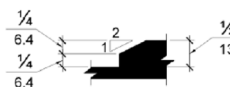
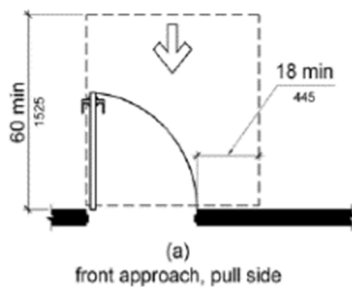
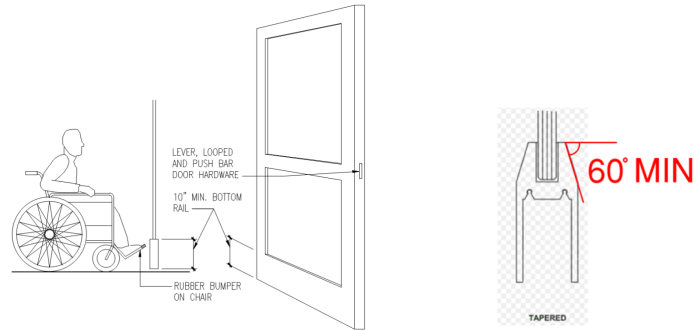


Figure 303.3 Beveled Change in Level

- Doors must have appropriate clearance (at least 18" on the pull side of all doors).



- The bottom 10" of all doors must be smooth.



- All hardware must be operable (lever style handles, NO KNOBS).
- Any vision glass cannot be higher than 43". This includes any swinging Eliaison doors throughout.
- Any check-in and check-out counters, reception counters, sales counters must have an accessible portion at least 36" wide and no higher than 36".
- Ensure any countertop edges do not protrude more than 4" from the wall.

### Restrooms:

- A proper tactile sign at the door is required.

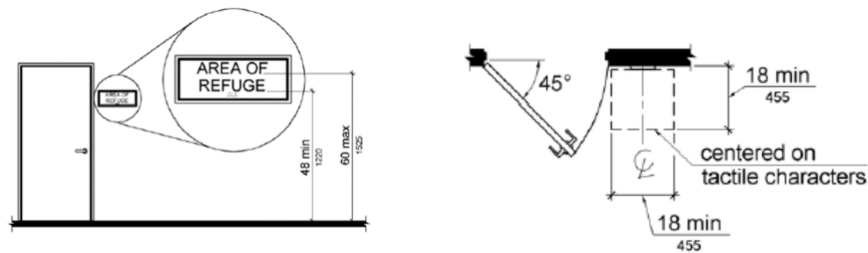


Figure 703.4.1 Height of Tactile Characters Above Finish Floor or Ground

- A turn space must be in the room (not in a stall). This can be a 60" round turn space or a t-shaped turn space (below).

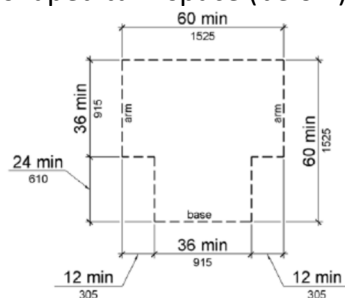


Figure 304.3.2 T-Shaped Turning Space

- The toilet must have a clear floor space at least 60" wide and 56" deep. No storage cabinets, sinks, or other fixtures in this zone. Only grab bars and dispensers related to the toilet.

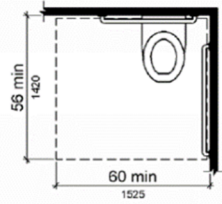


Figure 604.3.1 Size of Clearance at Water Closets

- Accessible stalls must be at least 60" wide and 56" deep for wall mounted toilets and 59" deep for floor mounted toilets. The door should swing out in most cases. It cannot swing in over that zone. If the stalls are full height walls they must be 6" wider in each direction. This is often missed.
- Grab bars are required to be located as shown below. They should be 33"-36" to the TOP of the bar.

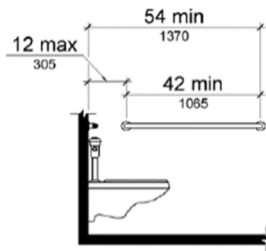


Figure 604.5.1 Side Wall Grab Bar at Water Closets

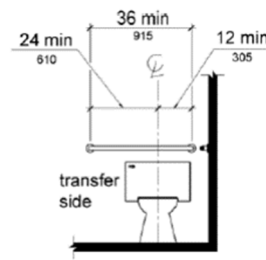


Figure 604.5.2 Rear Wall Grab Bar at Water Closets

- No dispensers can be in the 12" clear zone above grab bars or the 1-1/2" clear zone below grab bars. Seat cover dispensers are often misplaced here.

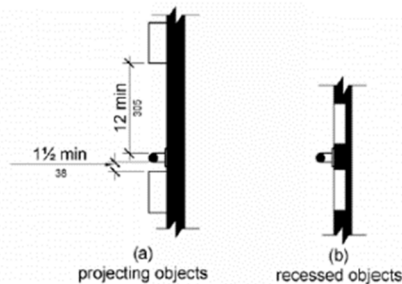
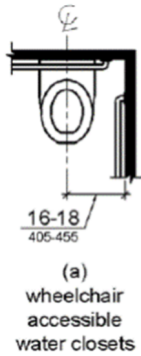


Figure 609.3 Spacing of Grab Bars

- Accessible stalls must have self-closing hinges and have operable pull handles on EACH side.

- Toilets should be located 16"-18" from the side wall.



- Toilet seats must be 17"-19" to TOP of seat.
- Toilet flush controls must be on the wide side of the room.
- Toilet paper dispensers must be 7"-9" from the front of the toilet to the center of the overall dispenser.

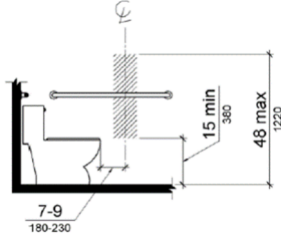


Figure 604.7 Dispenser Outlet Location

- Coat hooks must be within the 48" reach range (to TOP of hook).
- Sinks must be 34" high to rim/counter (whichever is higher). Elements and piping underneath must be protected against contact.
- Any sloped millwork and piping must allow for a forward approach as shown below.

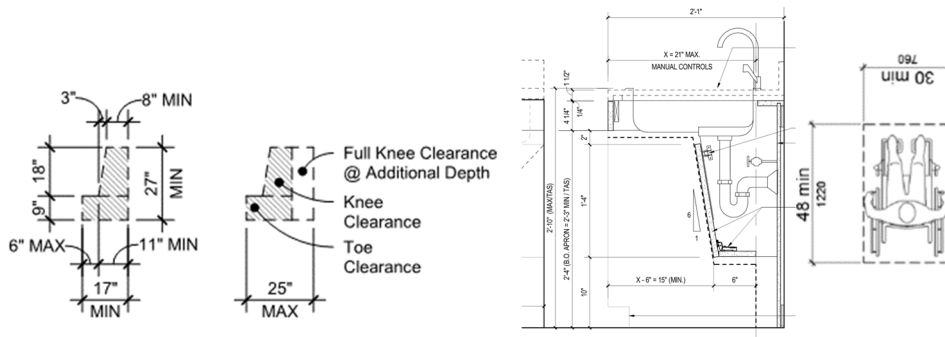


Figure 305.3 Clear Floor or Ground Space

- Mirrors over sinks must be no higher than 40" to bottom of REFLECTIVE surface.

- Baby changing stations must provide room for a centered forward approach. They must be installed 27" HOLD to the bottom of the table in the open position. This ensures it is not a protruding object in the open or closed position.

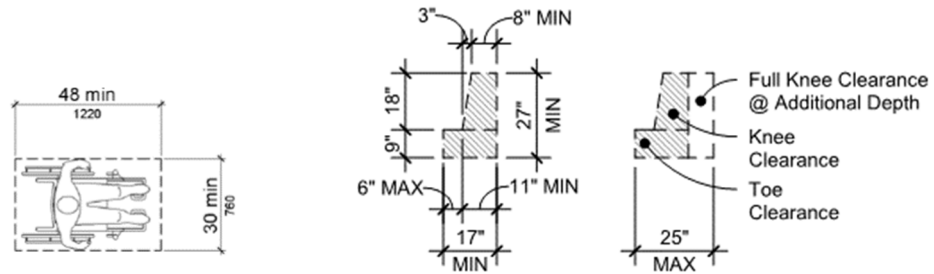


Figure 305.3 Clear Floor or Ground Space

- Various soap and paper towel dispensers must be within the appropriate reach range.

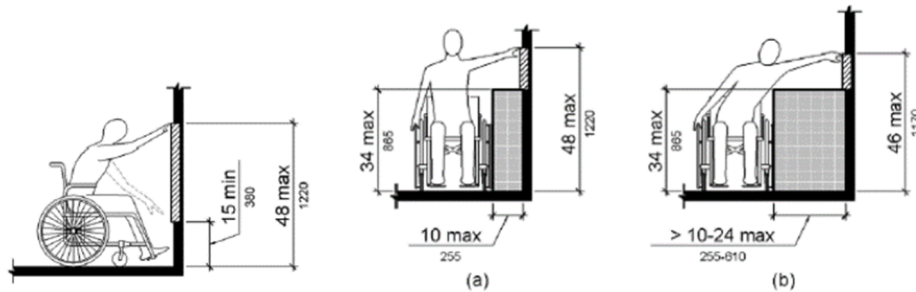


Figure 308.2.1 Unobstructed Forward Reach

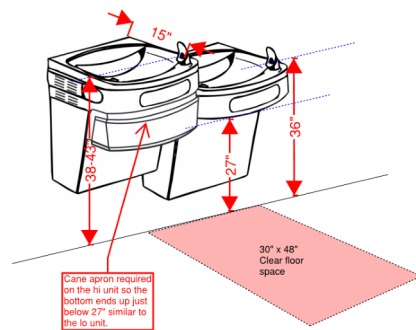
Figure 308.3.2 Obstructed High Side Reach

### Break Rooms:

- Sinks must be 34" high to rim/counter (whichever is higher). Elements and piping underneath must be protected against contact.
- Any sloped millwork and piping must allow for a forward approach as shown below.
- All appliances must be within the appropriate reach range. This usually means no microwaves in upper cabinets.

## Drinking Fountains:

- If provided, there must be a hi/lo setup. You cannot have just a lo fountain.



- If not in a nook, the hi fountain should have the cane apron option so it is not a protruding object.
- Bottle fillers are currently not regulated by TAS/ADA, but it is best practice to ensure they are in the 48" reach range.

## Dining Areas:

- 5% of each type of seating must be accessible. This includes 34" max height and room underneath for a forward approach.

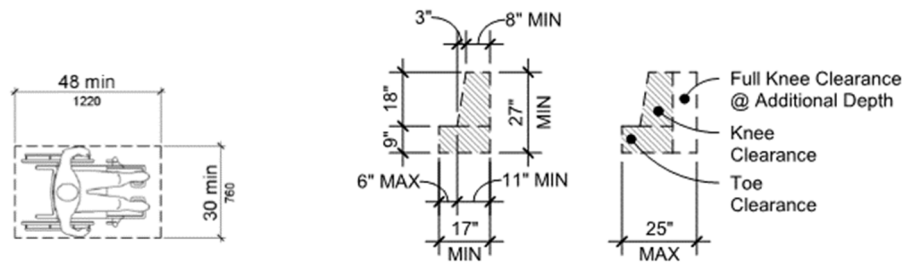


Figure 305.3 Clear Floor or Ground Space

- Accessible dining seating must be dispersed in various areas to include, bars, tables, booths, patios, private rooms, etc.

## Protruding Objects:

- Objects on walls on any circulation path (including restrooms) should not be more than 4" deep if it is located between 27" - 80" high. Common violations are light sconces, counter edges, large barrel style paper towel dispensers, FDC valve connections, etc.

